



ULURU

Uluru is an exceptional luminaire for wall-grazing & washing applications, available in static white, dynamic white or RGBW, latest generation of Cree's LEDs in symmetrical and asymmetrical lens with multiple beam angles, built-in DMX module, surface mount with adjustable brackets make it easy for precise illumination, continuous runs of uniform illumination, UV resistant anti yellowing tempered glass diffuser, brilliant colour consistency perfect for a variety of indoor and outdoor applications, sealed IP66 for harsh outdoor environments, customized product available upon request, available in three different sizes.

Material- Extruded aluminium channel, UV resistant tempered safety glass

Finish- Silver anodized

Efficacy- 82lm/W for white, 40lm/W for RGBW

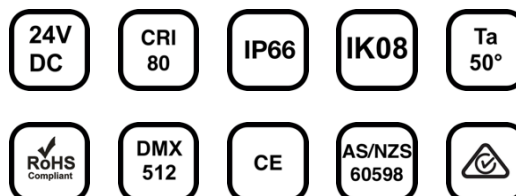
Pixels- 4 pixels p/m standard, others pixels upon request.

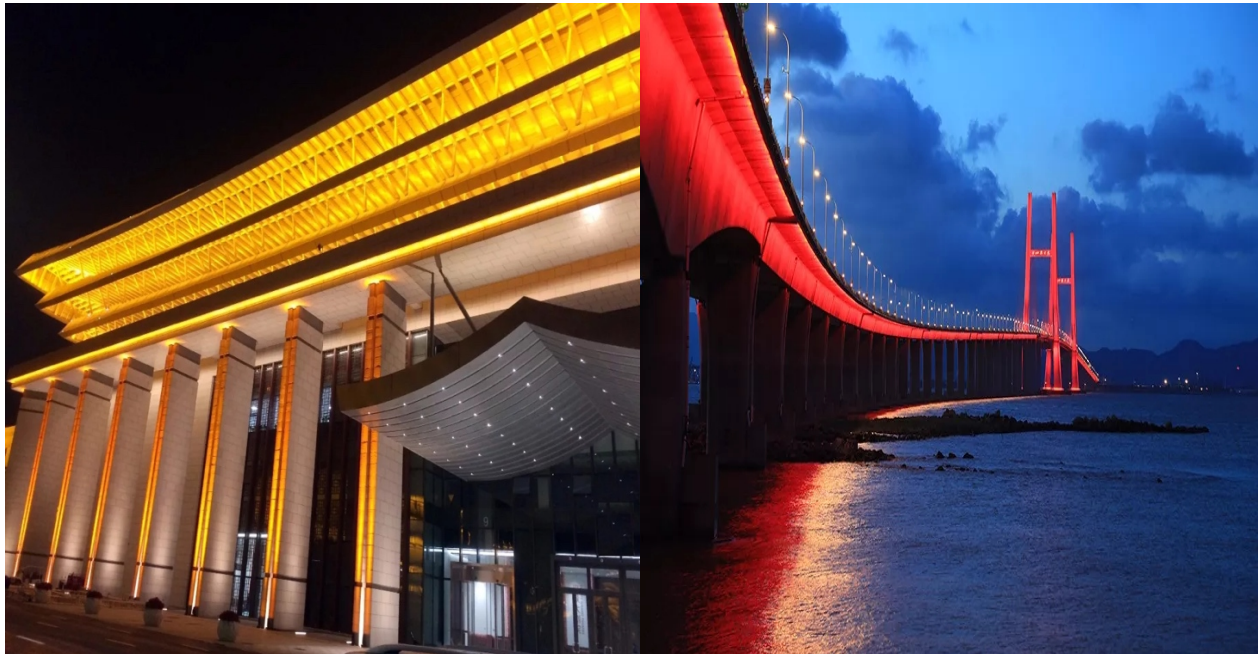
Input voltage- 24V DC

Dimming- 1-10V, DALI or DSI.

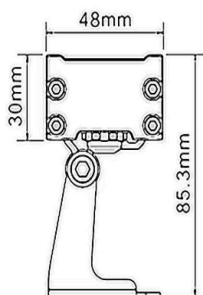
Life: 61,000 Hours L80 B20

Warranty: 3 years

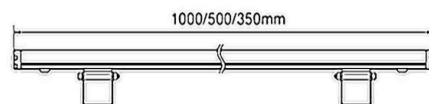




Model number	Wattage	Lens	CCT	Accessory	Controls
UL-9-30-RGBW-D (350mm)	9W 12W	30° 45°	2700K 3000K	C: Cowl H: Honeycomb	S: Standard A: 0-10V D: DMX 512 Da: Dali
UL-12-30-RGBW-D (500mm)	12W 18W	60° 10° x 60°	4000K 5000K RGBW		
UL-36-30-RGBW-D (1000mm)	24W 36W				



Dimensions



weight: 2.7KG p/m

