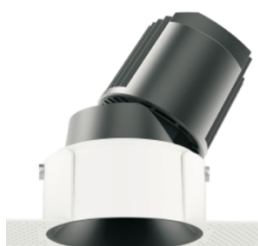


## PINO L



**M**inimalist profile with just 5mm trim which blends seamlessly with ceilings, a versatile down light family with round and square shapes have fixed and adjustable options, a massive choice of reflectors and colours which is ideal for hospitality, residential, commercial and retail applications, deep LED source with 35° cut-off angle for anti-dazzling and provides visual comfort, various beam angles from narrow 18° to wide beam 45°, custom solutions available upon request.

**Material-** Die-cast aluminium body

**Reflector-** vacuum electroplated for specular aluminium

**Finish-** Trim in white powder coat, black as an option

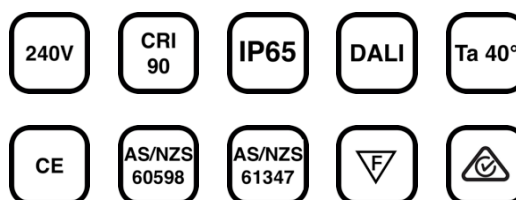
**Efficacy-** 80lm/W

**Input voltage-** 240V 50/60Hz

**Dimming-** Dali, DSI, 1-10V as an option

**Life:** 50,000 Hours L80 B10

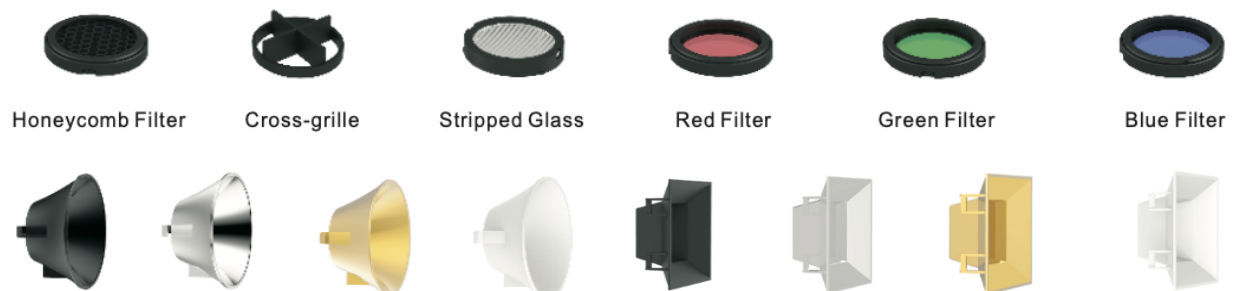
**Warranty:** 3 years



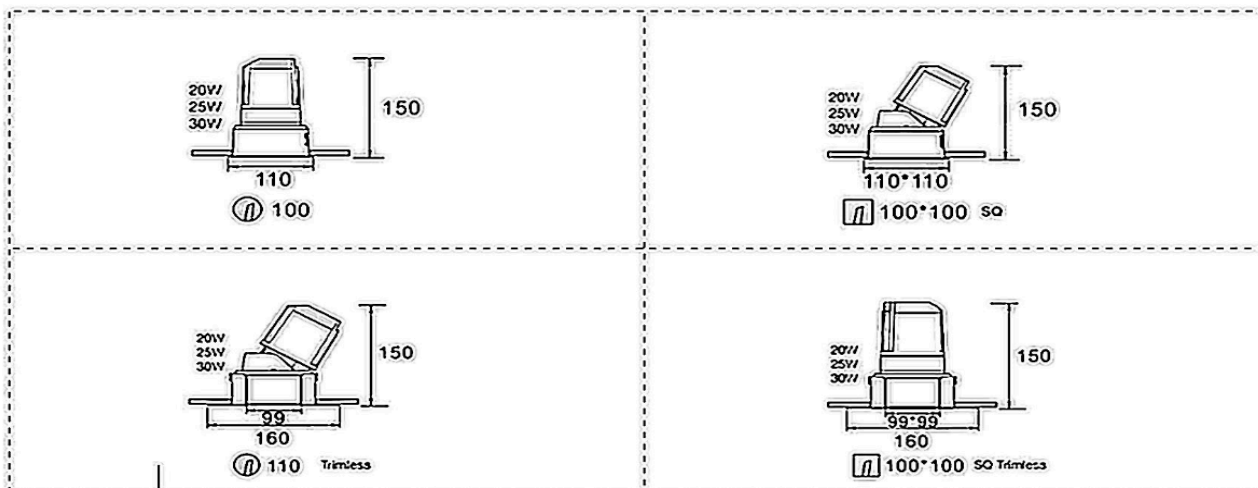


Model number: PIL-R-F-20W-24-30K-BK-S						
Shape	Adjustability	Wattage	Beam angle	CCT	Reflector	Controls
R: Round S: Square	F: Fixed A: Adjustable	20W 25W 30W	18° 24° 36° 45°	2700K 3000K 4000K 5000K	B: Black S: Silver G: Gold W: White H: Honeycomb R: Red	S: Standard A: 1-10V D: DALI Dimming T: Triac E: Emergency SI: DSI dimming

### Optical Accessories



## Dimensions



High-power LED  
SDCM<3



Superior thermal  
management



Vertical 25°



Different light  
distributions



DALI dimming



Different dimming



Optischer cut-off 35°



IP level



Horizontal 360°



Different color  
temperatures



Deep anti-dazzle



Different color  
filters

